

BANISTER PLACE

3809 S. 2ND STREET, STE. D-100 | AUSTIN, TX 78704

OFFICE | LEASE



LEASING INFORMATION

BLAKE KELLER

512.441.1062

BLAKE@KPGCOMMERCIAL.COM

BANISTER PLACE

OFFICE | LEASE

3809 S. 2ND ST., STE. C400 | AUSTIN, TEXAS 78704

✓ AVAILABILITY

BUILDING D

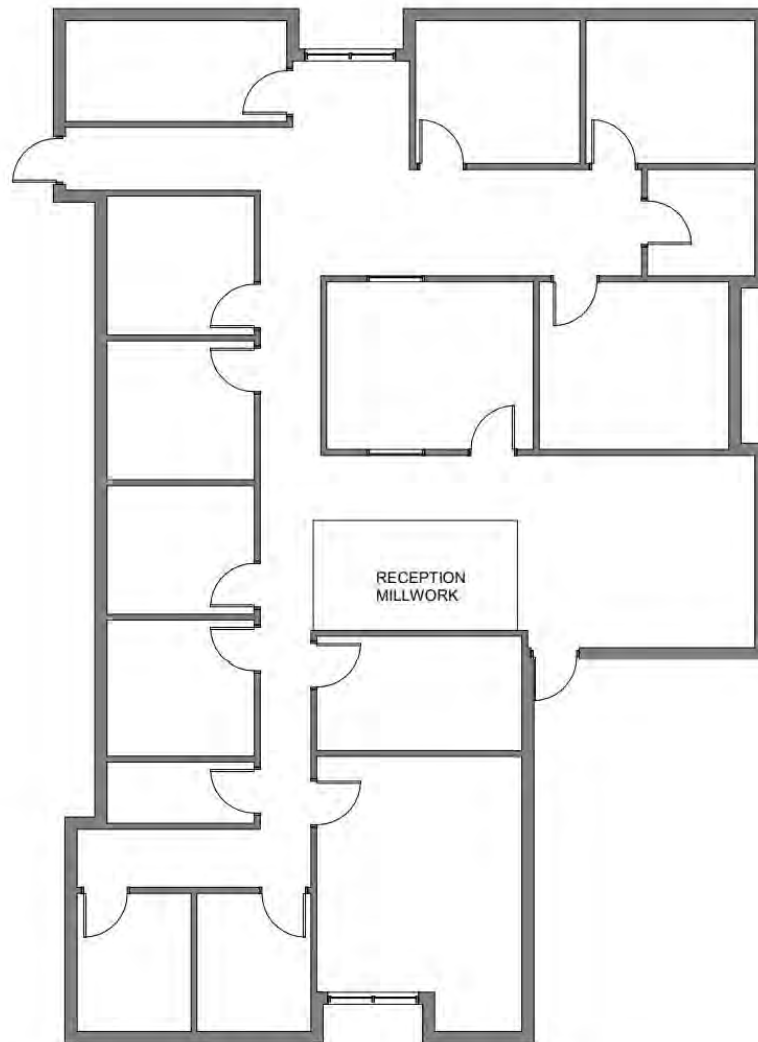
SUITE 100-2680 RSF

* RENTABLE SQUARE FEET

💰 LEASE TERMS

RATE: STARTING AT \$16/RSF + NNN

TERM: 2-3 years



Suite D-100
Existing Floor Plan

LEASING INFORMATION

BLAKE KELLER

512.441.1062

blake@kpgcommercial.com



The information contained in this offering material ("Summary") is confidential, furnished solely for the purpose of the review by a prospective purchaser of the Property and is not to be used for any other purpose or made available to any other person without the express written consent of KPG Commercial, Broker. The material is based in part upon information supplied by the owner of the Property ("Owner") and in part upon information obtained by KPG Commercial, Broker from sources it deems reliable. Summaries of any documents are not intended to be comprehensive or all inclusive but rather only outlines of some of the provisions contained herein or as to engineering or environmental matters. Prospective purchasers should make their own projections and conclusions without reliance upon the material contained herein and conduct their own independent due diligence, including engineering and environmental inspections, to determine the condition of the property and the existence of any potentially hazardous material used in the construction or maintenance of the building or located on site.